



Affordable workspace for local businesses and social enterprises

27 Dingley Pl, EC1V 8BR, 10mins to Old Street



Dingley Space is a short walk from Old Street station and close to Clerkenwell and Angel. Located in a historic brick building, it offers below market rate coworking desks and studios and a large event space for hire. Dingley Space is an opportunity for local businesses to grow their endeavours close to Central London networks and amenities.



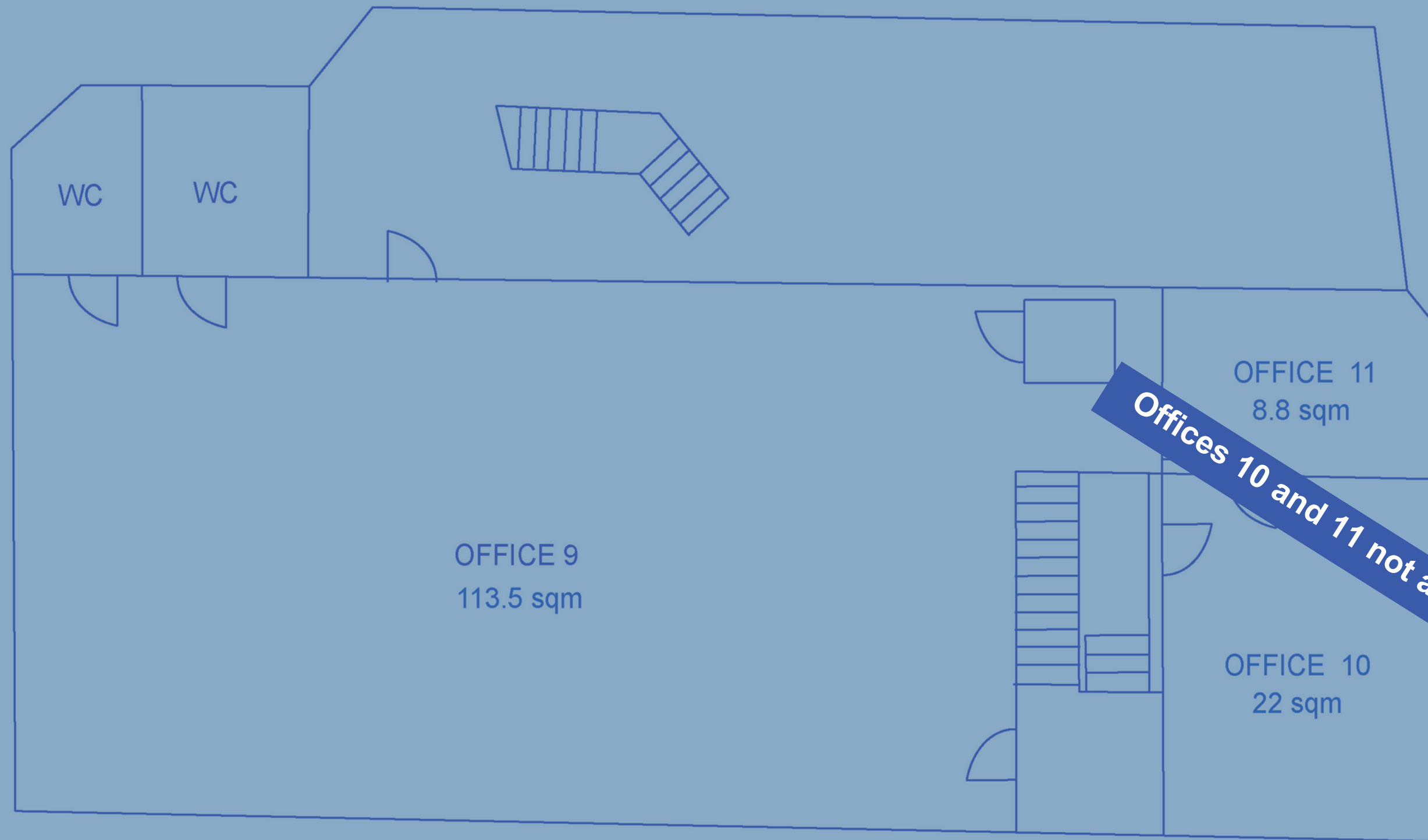
Large office, 113sqm. £4,700 pcm
including rent, VAT and service charge

Includes discounted use of event space. Looking for full or part occupation of the space. Please enquire if you are interested in a team desk/block of desk discount.



Second Floor

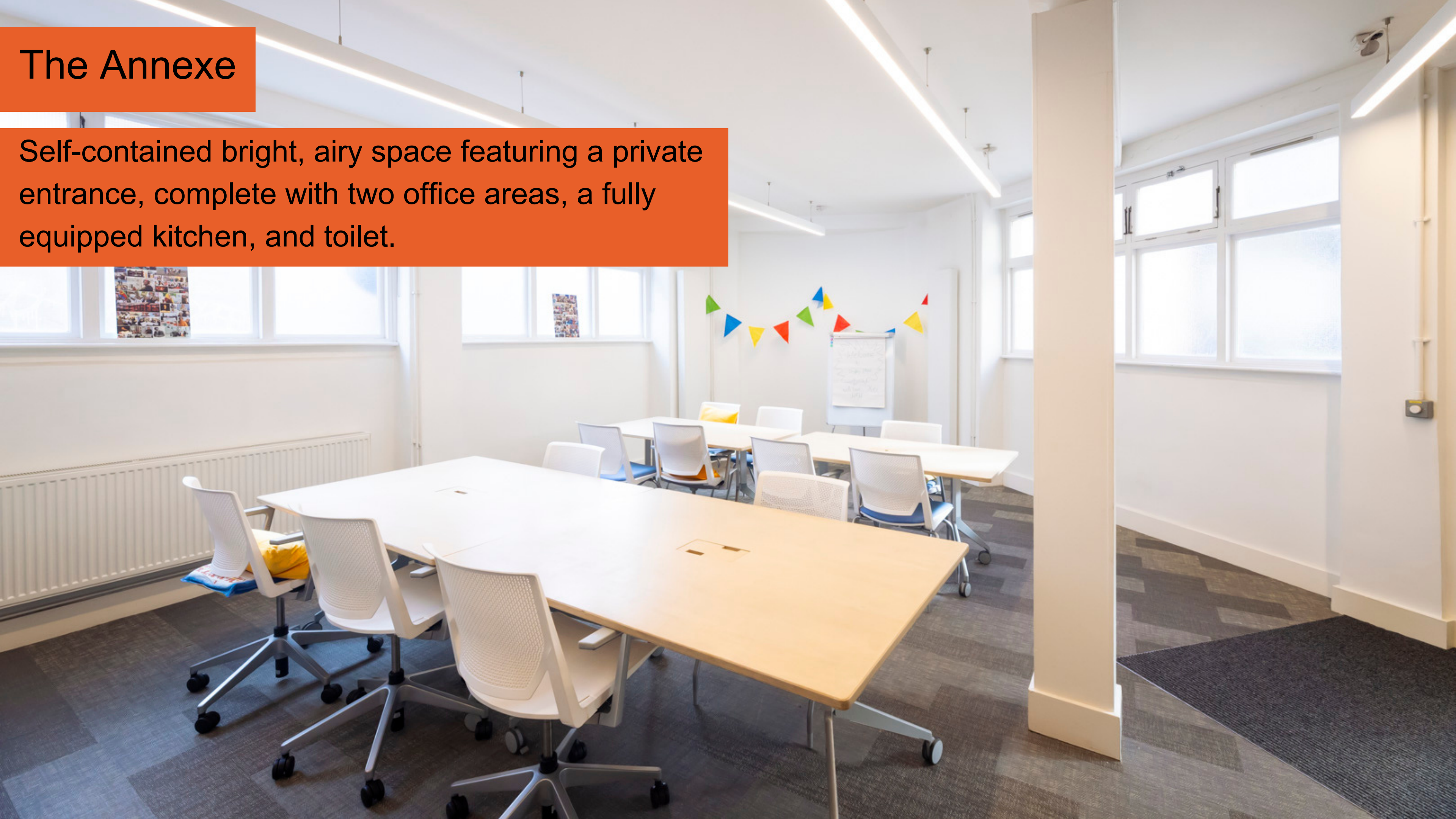
The floor is fully accessible.



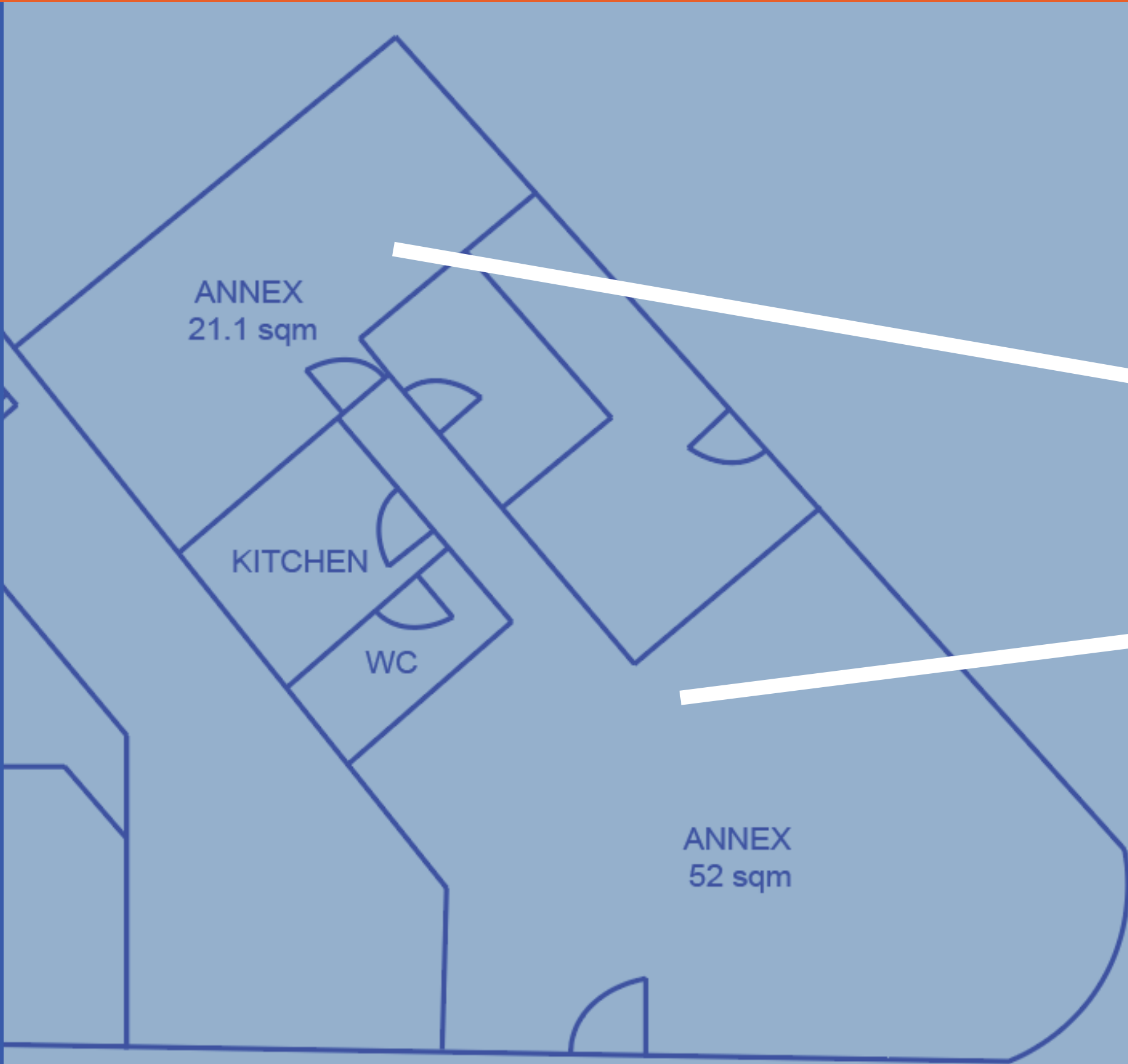
Offices 10 and 11 not available

The Annexe

Self-contained bright, airy space featuring a private entrance, complete with two office areas, a fully equipped kitchen, and toilet.



We are looking for one business to take on the whole of the annexe



The Annexe Floor Plan

£1,000 pcm*

£2,160 pcm*

Total price of annex:
£3,160 pcm*

*includes rent, VAT and service charge

Event Space for hire

Talk to us about your requirements.
Rates upon request



Enquire today

Scan the QR code or head [here](#) to fill out an expression of interest



Learn more about our application process [here](#)

For any other enquiries:

dingleyspace@meanwhitespace.com
edie@meanwhitespace.com

Find us at:

 [dingleyspace](#)
 dingleyspace.com

